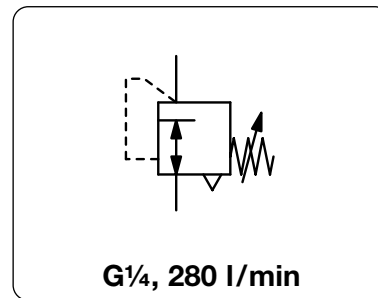


# PRECISION PRESSURE REGULATOR

11-818

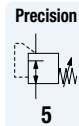
<b>Description</b>	Precision pressure regulator designed for precise pressure control in the event of changes in flow and supply pressure. Due to constant bleed slight blow-off sounds existing.	
<b>Media</b>	dry, oil-free and 25 µm filtered compressed air	
<b>Supply pressure</b>	max. 8 bar for 0.02...0.5 bar, max. 10 bar for 0.07...4 bar, max. 14 bar for 0.4...10 bar	
<b>Accuracy</b>	at varying supply pressures: < 20 mbar pressure deviation at varying volume flows: < 30 mbar pressure deviation at 5 °C / K temperature variation: < 3 mbar pressure deviation	
<b>Air consumption</b>	max. 2 l/min, subject to outlet pressure	
<b>Adjustment</b>	by handwheel for panel mounting, optionally by spindle	
<b>Relieving function</b>	relieving, 3 mm exhaust diameter	
<b>Gauge port</b>	G¼ on both sides of the body, optionally without gauge port	<b>Mounting position</b> any
<b>Temperature range</b>	0 °C to 70 °C / 32 °F to 158 °F, for appropriately conditioned compressed air down to -30 °C / -22 °F	
<b>Material</b>	Body: zinc die-cast Elastomer: NBR/Buna-N	Inner valve: brass, plastic



Dimensions			Description	P <sub>1</sub> max.	Flow rate	Connection thread	Pressure range	Order number
A	B	C						
mm	mm	mm		bar	l/min*1	G	bar	

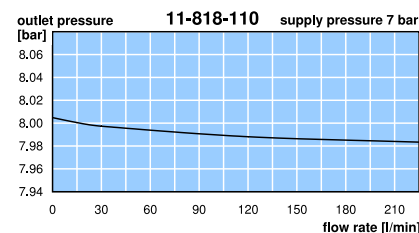
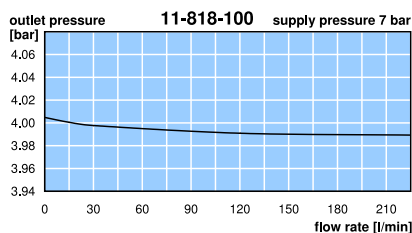
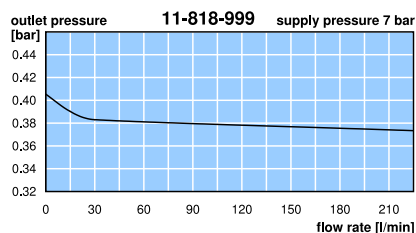
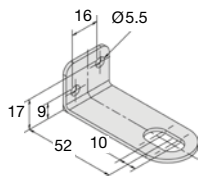
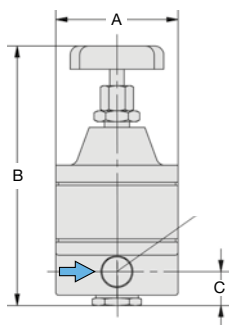
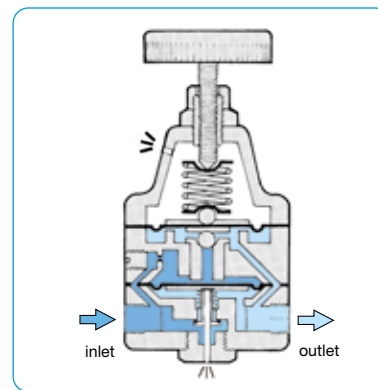
Precision pressure regulator			P1: max. 8 / 10 / 14 bar, relieving, with constant bleed, accuracy < 30 mbar, K <sub>v</sub> = 0.16 m³/h		11-818		
55	137	13	handwheel w/o gauge port	8 10 14	280	G¼ 0.02...0.5 0.07...4.0 0.40... 10	11-818-999 11-818-100 11-818-110
55	137	13	handwheel with gauge port	8 10 14	280	G¼ 0.02...0.5 0.07...4.0 0.40... 10	11-818-987 11-818-993 11-818-991
55	137	13	spindle w/o gauge port	8 10 14	280	G¼ 0.02...0.5 0.07...4.0 0.40... 10	11-818-998 11-818-101 11-818-112

**Special options,** add the appropriate letter  
**tamper-proof cap** made of brass, adjustment by screwdriver, total height 108 mm 11-818-...T



**Accessories,** enclosed

<b>pressure gauge</b>	Ø 50 mm, 0...*2 bar, G¼	<b>MA5002-...*2</b>
<b>mounting bracket</b>	made of steel, mounting nut at the device	<b>BW12-01</b>
<b>mounting nut</b>	for metal sheet thickness from 2.5 up to 6 mm	<b>3081-01</b>



\*1 at 7 bar supply pressure and 1.4 bar outlet pressure

\*2 01 = 0...1 bar, 04 = 0...4 bar, 10 = 0...10 bar

\* Product group

Gauges: see chapter for measuring devices

PDF CAD  
www.aircom.net



Order example:  
11-818-999